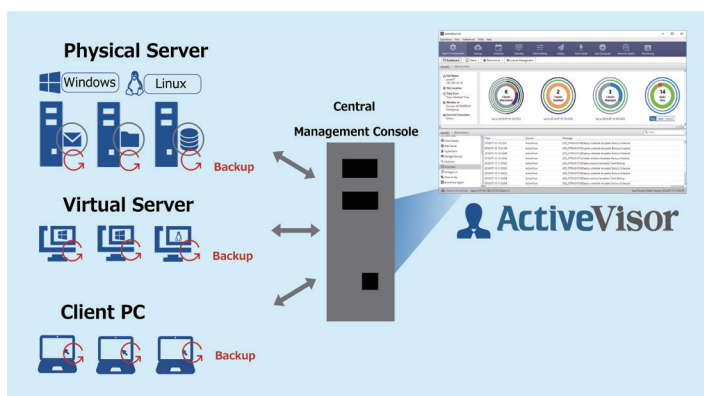


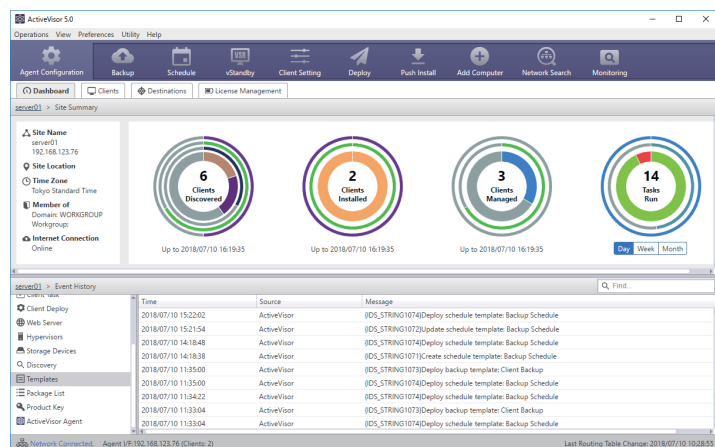
# ActiveVisor™

ActiveVisor monitors the status of ActiveImage managed clients in order to easily maintain business continuity. By collecting information from distributed agents over the network, ActiveVisor provides a visual representation or can send email notifications of managed clients' backup status, and monitors storage space availability of devices.



The built-in dashboard provides a graphical presentation of a variety of data.

The Dashboard window provides a visual presentation of an assortment of critical data that includes; the number of found computers, managed or unmanaged, OS types, ActiveImage specific editions installed, and visually draws attention to the task status of backup executions.



## Detailed and flexible schedule settings

Schedule settings may be configured by client. Or, using a pre-defined template, you can deploy a pattern-based backup schedules to clients in a batch.

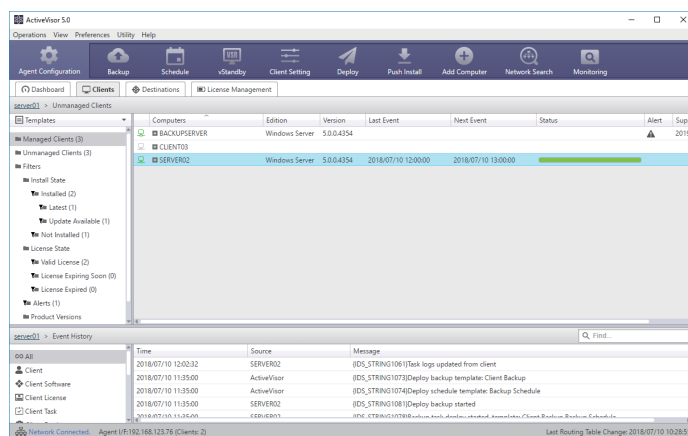
The screenshot shows the 'Schedule Template Wizard' dialog box. It has two tabs: 'Schedule' and 'Summary'. The 'Schedule' tab is active, showing a calendar view for selecting a date and time for the backup. The 'Summary' tab is also visible, showing the configured schedule details.

## Advantages of using ActiveVisor :

- System administrators can save time and reduce costs by managing ActiveImage Protector agent settings from a single console.
- In the event of a system failure, ActiveVisor 's built with a simplified user interface that displays a table with information on machine specific failures so that system recovery can be initiated immediately.
- When an unexpected delay in the backup process occurs, ActiveVisor displays an easy-to-understand metric of backup status, with an enhanced system data administration and management capability.

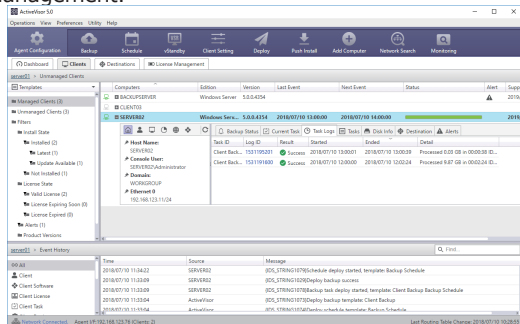
## Client List

Select a specific client from the list of search results from active directory or a workgroup network and add it to the list of managed clients. Then, monitor the managed client information and backup task execution status, or start and stop backup tasks.



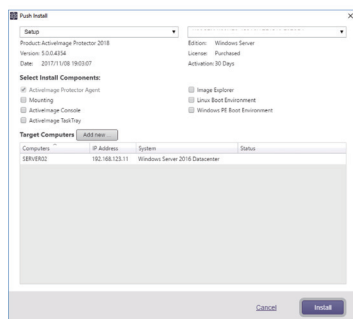
## Monitor client status and collect log information

ActiveVisor provides a monitoring feature enabling you to monitor the backup status, task execution and client status. Updating the information of client agent, ActiveVisor offers a display of the task execution log for the respective clients and offers accurate assessment of sufficient client space for destination storage management.



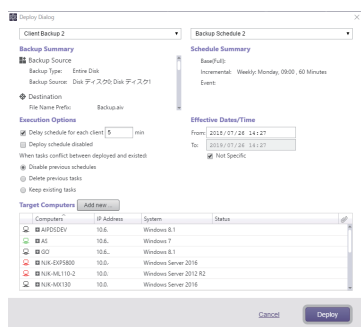
## Push Install from remote site

The Built-in Push Installer is designed to find a client PC in the identical domain environment or workgroup, and remotely push install ActiveImage Protector to the client PC.



## Deployment

Create Backup, vStandby, Schedule, and Client Settings Templates for Deployment to the managed clients individually or in a batch to a number of selected clients at once. In necessary, the backup and schedule templates can be combined for a single or batch deployment.



## System Requirements

### ■ Hardware

- CPU : Pentium 4 or above
- Main Memory : 2048MB or more is required.
- Hard Disk Space : 500MB or more is required.

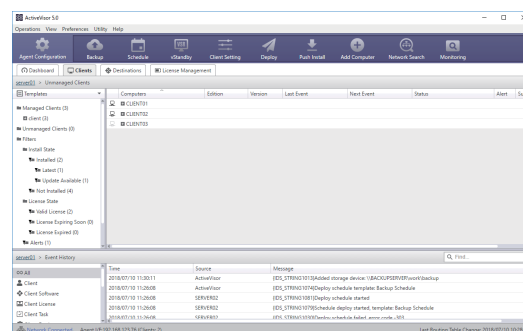
### ■ Operating System (at time of ActiveVisor install)

Windows 7 (x64)\*, Windows Server 2008R2 or later.

\*If User Account Control is enabled in the desktop OS, etc., the program may ask for permission to proceed. If prompted, select [Allow] to proceed with the install wizard operation.

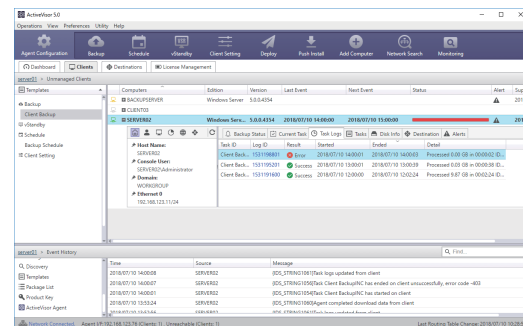
## Management of Clients by Group

Clients can be grouped for management. The group may be rearranged, if necessary, in accordance to changes within the system configuration.



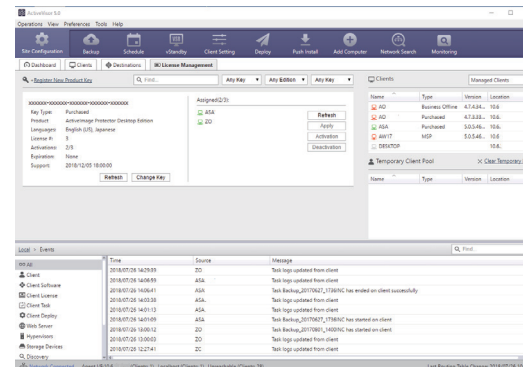
## Alert feature provides visual indication of a system failure

In the event of a system failure, the GUI displays a table view illustrating what failure occurred on which client so that system recovery can be initiated immediately.



## License Manager

The License Manager provides centralized management of ActiveImage Protector agents installed, displays the product key information including the current status of the license and support service contracts. Also, batch activations can be performed to save time and if necessary, licenses can be re-assigned to unmanaged clients.



### ■ Managed Client

ActiveVisor supports clients running ActiveImage Protector 2018 SP2 or later. For clients running ActiveImage Protector 2018 or 2016 R2, the ActiveVisor feature set will have some limitations.

### ■ Prices

ActiveVisor is offered free of charge to ActiveImage Protector users who have a current annual support maintenance contract. If you have no current annual support maintenance contract and are running ActiveImage Protector, please contact NetJapan's Corporate Sales Dept.